

ABOUT THOMAS & BETTS POWER SOLUTIONS

Thomas & Betts Power Solutions is the leading designer, manufacturer and provider of power quality and reliability products and services marketed under the brand names Cyberex®, Current Technology® and Joslyn®.

Thomas & Betts Power Solutions, LLC is a wholly owned subsidiary of Thomas & Betts (NYSE: TNB).

Thomas & Betts *Power Solutions*

5900 Eastport Blvd., Bldg. V
Richmond, VA U.S.A. 23231-4453
Toll free: (800) 238-5000
Tel: (804) 236-3300
Fax: (804) 236-4841
www.tnbpowersolutions.com



Toll free: (800) 238-5000
www.cyberex.com

© 2007, Thomas & Betts Power Solutions.

Cyberex® is a registered trademark of Thomas & Betts Power Solutions.

Printed in U.S.A. All Rights Reserved.

10.9.07/SS2/2.5k

SUPERSWITCH™ TECHNOLOGY

Redefining Reliability



DID YOU KNOW?

Cyberex invented the first stand-alone STS in 1971 and the first fully digital unit in 1994. Cyberex continues to lead the market with breakthrough technologies.

SUPERSWITCH REDEFINES RELIABILITY

Designed with a true fault tolerant architecture, SuperSwitch™ ensures continuous protection in the event of a power disturbance. Rated from 1200 to 4000 Amps, SuperSwitch is a key design element for large, mission critical commercial and industrial applications.

Through the use of our patented transfer algorithm and robust electrical components, SuperSwitch defines power reliability with its exceptional design, serviceability and user interface. No matter whether the sources are UPS systems, utilities or generators, SuperSwitch delivers the most cost-effective protection.

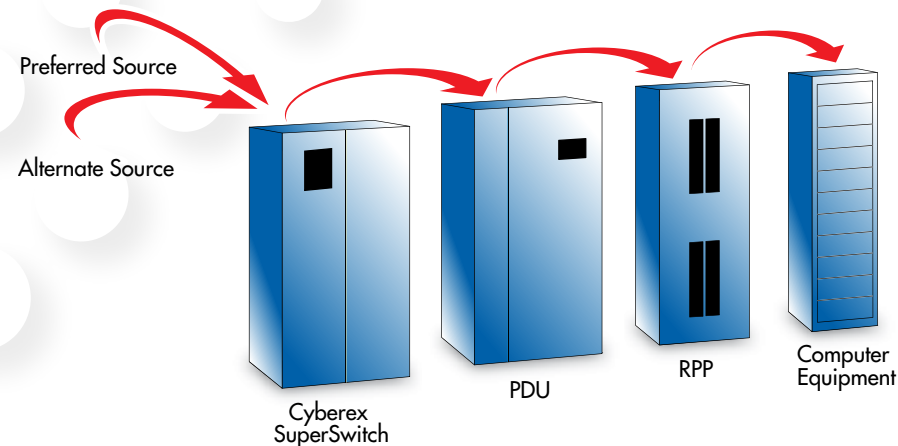
BREAKTHROUGH TECHNOLOGY

- **Fault-tolerant** architecture eliminates single point of failure
- **Patented SuperSwitch™** algorithm delivers unmatched transfer characteristics
- **Intuitive user-interface** and mimic panel simplify local system monitoring and configuration
- **Fast Source Reacquisition** permits the fastest return to the preferred source
- **User-definable setpoints** improve configuration of system to the load
- **Remote access** capability enhances system, event and alarm monitoring
- **Detailed Monitoring**, Reporting and Trending capability improve data analysis
- **Small Footprint** reduces demand on valuable real estate
- **Flexible access** improves installation, operation and maintenance

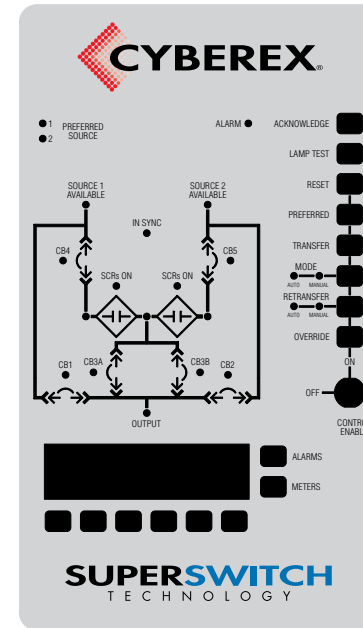


Front view of SuperSwitch showing system modularity

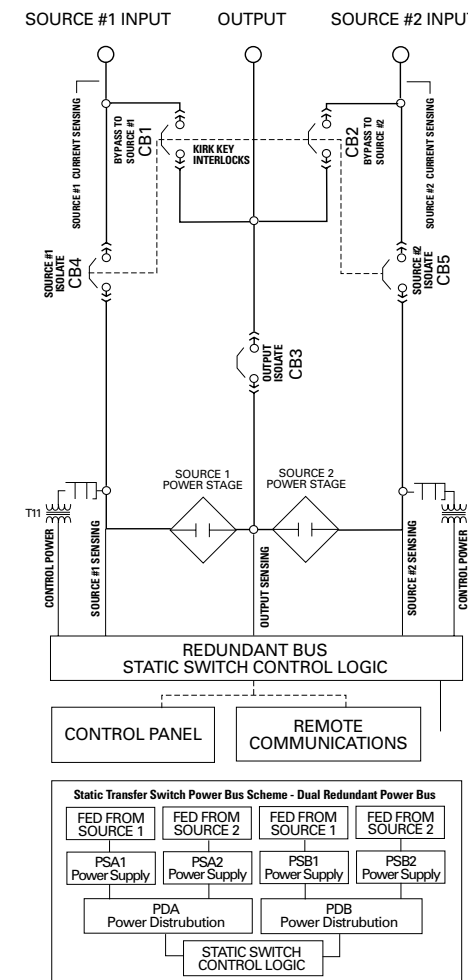
SUPERSWITCH PROVIDES ADDED RELIABILITY TO ANY ARCHITECTURE



For more information go to www.Cyberex.com



User-friendly control and mimic panel provide quick system configuration, power monitoring and response to alarms



FEATURES AND SPECIFICATIONS

Components

SCR	Fully-Rated, Hockey-Puck Type
Mimic Panel	LEDs Show Current Flow
LCD	Graphical, Backlit
Fans	Dual Redundant
Power Supplies	Quadruple Redundant
Internal Bus	Dual Redundant
TVSS	40kA

Communications and Software

Password Protection	Defined User Tiers
Remote Access	RS232, RS485
Event Types	Information, Warnings and Alarms
Alarm Notification	Annunciator & Modbus
Emergency Power Off	Remote (Opt.) Local (Opt.)
Relay Contacts	5 (Opt.)

Power Monitoring

Metering	kVA, kW, Ipeak, Phase, Current, Voltage, Frequency Power Factor, kVA Demand, Harmonic Analyzer
----------	---

Electrical Characteristics

Voltage/Frequency	208/480/600V, 3 Phase, 3 Wire, 60Hz
Current Rating	1200/1600/2000/3000/4000A
Source Configurations	Two or Three Source
Short-Circuit Withstand	65kA
Overload Capability	125% (30 Min.) 150% (1 Min.) 1000% (3 Cycles)
Circuit Breakers	Non-Automatic or Automatic

Operational Characteristics

Controls	Full Digital
Type II	Fuseless Current Path
Transfer	Automatic or Manual
Sensing Time	2ms
Auto Transfer	4ms (or Less)
Transfer Angle	User-Defined: 180° Max
Temperature	0-40°C (Operating); 0-80°C (Storage)
Audible noise	<65 dBA (3 Ft.)

Standards

NEMA	All Applicable Standards
UL	STS – 1008 Listed
FCC	FCC Compliant (Part 15)
NEC	All Applicable Standards
ANSI	C62.41

SELECTION (TYPE II MODELS)

Amps	Volts	Cable Entry	Dim. (WxDxH)	BTU/hr	Model#
1200A	208V	Bottom Only	96"x60"x77"	5900	DSFR-31200-326-208
1200A	480V	Bottom Only	96"x60"x77"	13700	DSFR-31200-326-480
1200A	208V	Top Only	96"x48"x77"	5900	DSFR-31200-326-208
1200A	480V	Top Only	96"x48"x77"	13700	DSFR-31200-326-480
1600A	208V	Top Only	96"x48"x77"	7900	DSFR-31600-326-208
1600A	480V	Top Only	96"x48"x77"	18300	DSFR-31600-326-480
1600A	208V	Bottom/Top	120"x60"x77"	7900	DSFR-31600-326-208
1600A	480V	Bottom/Top	120"x60"x77"	18300	DSFR-31600-326-480
2000A	208V	Bottom/Top	120"x60"x77"	7900	DSFR-32000-326-208
2000A	480V	Bottom/Top	120"x60"x77"	18300	DSFR-32000-326-480
3000A	208V	Bottom/Top	120"x60"x77"	14300	DSFR-33000-326-208
3000A	480V	Bottom/Top	120"x60"x77"	34200	DSFR-33000-326-480
4000A	208V	Bottom/Top	120"x60"x77"	14300	DSFR-34000-326-208
4000A	480V	Bottom/Top	120"x60"x77"	34200	DSFR-34000-326-480

Access for all models is Front and Rear. Clearance around each unit varies based on local building codes. Consult factory for unit dimensional drawings and weight.